



MUSTEE

DURABASE® Fiberglass Shower Floors Rectangular, Single Threshold, 32" Series



Design features:

- Sturdy, 1-piece molded fiberglass construction – structural underbody for strength, slip resistant Starburst® surface
- Integral molded drain with seal for connection to 2" Sch. #40 ABS, PVC or iron DWV sanitary drain pipe. See optional drain seals for 1-1/2" pipe and 2" copper – removable strainer
- Available in White, Biscuit and Bone
- Semi-gloss surface – resistant to mold and mildew, easy to clean
- Designed to be used with Mustee's DURAWALL® shower walls, ceramic tile or preformed wall kit

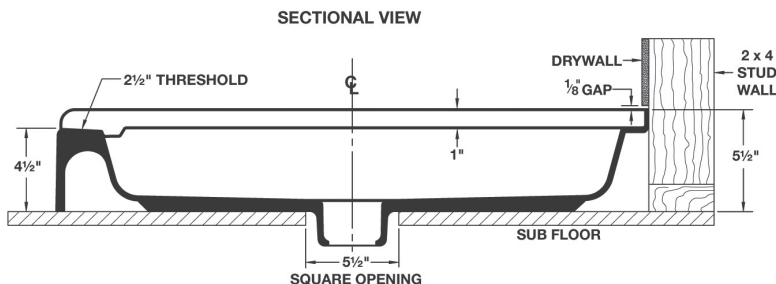
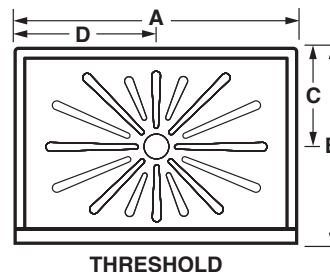
Code Accepted

- International Association of Plumbing and Mechanical Officials® (IAPMO®)
- Warnock Hersey® (Canada) Listed – CSA test standards Shower Floor
- American National Standards Institute (ANSI) – Specification ANSI Z 124-2017
- American Society of Testing and Materials (ASTM) – E-84
- CAN/ULC S102-07 Burn and Smoke Test

Specifications

Model	Nom. Size	Color	UPC	A	B	C	D
3248M	32" x 48"	White	6 71031 00085 9	48"	32"	16"	24"
3248BN	32" x 48"	Bone	6 71031 00083 5	48"	32"	16"	24"
3248BT	32" x 48"	Biscuit	6 71031 00351 5	48"	32"	16"	24"
3254M	32" x 54"	White	6 71031 00091 0	54"	32"	16"	27"
3260M	32" x 60"	White	6 71031 00094 1	60"	32"	16"	30"

General: Furnish and install as shown on plans. DURABASE® rectangular, single threshold shower floor model _____ as manufactured by E.L. Mustee & Sons, Inc. Floor to be one-piece, molded fiberglass, made with matched metal molds. Surface to be slip-resistant Starburst® design that does not interfere with the flow of water. Size ____" x ____". Shoulder will be no less than 3" high or less than 1" wide. Tiling flange will extend not less than 1" higher than the threshold which provides an integral molded water barrier. Threshold will be not less than 4-1/2" high. Molded-in drain and drain seal for installation of 2" iron DWV (Sch. 40) PVC or ABS sanitary drain pipe. Removable strainer. Shall meet ANSI Z 124-2017. Color: _____ (White, Bone, Biscuit)



MUSTEE

E.L. Mustee & Sons, Inc. • 5431 West 164th Street • Brook Park, OH 44142 • Phone: 216.267.3100 • Fax: 216.267.9997
E-mail: info@mustee.com • Web: www.mustee.com • Proudly made in the USA

Notice: Our continuous commitment to product improvement may result in changes to product specifications without notice.
Made and Printed in U.S.A.



MUSTEE

DURABASE® Fiberglass Shower Floor Accessories for 32" Series

572T VARISTONE™ — 5 PANEL SQUARE SHOWER WALLS, ADHESIVE-MOUNT



Model No.	Color	UPC	Fits DURABASE®
572TWHT	White	6 71031 00420 8	3248M, 3254M, 3260M
572TBN	Bone	6 71031 00421 5	3248BN

748-32 DURAWALL® — PREMIUM FIBERGLASS 3-PANEL RECTANGULAR SHOWER WALLS, DIRECT TO STUDWALL MOUNT



Model No.	Color	UPC	Fits DURABASE®
748-32WHT	White	6 71031 00338 6	3248M
748-32BN	Bone	6 71031 00339 3	3248BN

247 DURAWALL® — DELUXE THERMOPLASTIC 5-PANEL RECTANGULAR SHOWER WALLS, ADHESIVE MOUNT



Model No.	Color	UPC	Fits DURABASE®
247WHT	White	6 71031 00048 4	3248M

260 DURAWALL® — DELUXE THERMOPLASTIC 5-PANEL RECTANGULAR SHOWER WALLS, ADHESIVE MOUNT



Model No.	Color	UPC	Fits DURABASE®
260WHT	White	6 71031 00053 8	3248M, 3254M, 3260M

265 DURAWALL® — DELUXE THERMOPLASTIC 5-PANEL RECTANGULAR SHOWER WALLS, ADHESIVE MOUNT



Model No.	Color	UPC	Fits DURABASE®
265WHT	White	6 71031 00478 9	3248M, 3254M, 3260M



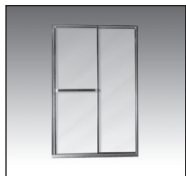
MUSTEE

E.L. Mustee & Sons, Inc. • 5431 West 164th Street • Brook Park, OH 44142 • Phone: 216.267.3100 • Fax: 216.267.9997
 E-mail: info@mustee.com • Web: www.mustee.com • Proudly made in the USA

Notice: Our continuous commitment to product improvement may result in changes to product specifications without notice.
 Patents pending. Made and Printed in U.S.A.



STYLEMATE® — BY-PASS FRAMED AND BY-PASS FRAMELESS ENCLOSURES



Model No.	Finish	Glass	UPC (for enclosure)	Fits DURABASE®
Framed Design				
48.403	Chrome	Clear	6 71031 00466 6	3248M, 3248BN, 3248BT
48.404	Brushed Nickel	Clear	6 71031 00467 3	3248M, 3248BN, 3248BT
60.403	Chrome	Clear	6 71031 00472 7	3260M
60.404	Brushed Nickel	Clear	6 71031 00473 4	3260M
Frameless Design				
48.407	Brushed Nickel	Clear	6 71031 00470 3	3248M, 3248BN, 3248BT
60.406	Chrome	Clear	6 71031 00475 8	3260M
60.407	Brushed Nickel	Clear	6 71031 00476 5	3260M

Mustee's DURABASE® Shower Floors are just the beginning of a beautiful shower space that can be created in virtually any location. The accessory products presented here will help you build the shower of your dreams, starting with Mustee's renown DURABASE® Shower Floors.

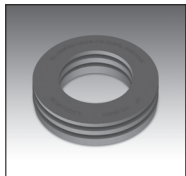
GapSeal-Pro™ — FOR ALL SHOWER FLOORS AND BATHTUBS



Model No.	Description	UPC
60.320A	132" long x 2" tall	6 71031 00496 3

The flexible PVC GapSeal-Pro™ features a strong adhesive strip that allows it to be easily positioned to "extend" tile flange and effectively seal the gap between drywall or like-surfaces on shower floors or bathtubs. Patent pending.

Drain Seals



Model No.	Description	UPC
32.404	Drain Seal for 2" copper pipe	6 71031 00313 3
32.405	Drain Seal for 1-1/2" ABS/PVC pipe	6 71031 00397 3

Designed to effectively seal the connection between DWV piping and the molded-in drain for all DURABASE® shower floors.

Strainers



Model No.	Description	UPC
34.301	Strainer – Stainless steel	6 71031 00532 8
42.322	Strainer – Molded plastic - White	6 71031 00533 5
42.323	Strainer – Molded plastic - Bone	6 71031 00534 2
42.326	Strainer – Molded plastic - Chrome	6 71031 00493 2

Premium grade, removable strainers.

